



Vanlife

CAMPERVANS
RENAULT MASTER BASE
MODELS 2024



Ahorn Campervans



FLEXIBLE, SPONTANEOUS, RELIABLE

Setting off spontaneously, heading for the next destination and enjoying the freedom of travelling – that's what Vanlife is all about. Our two campervan models Van 550 and Van 620 inspire with a reliable Renault chassis, a well thought-out space concept and an outstanding price-performance ratio. Whether single beds or double beds, it's entirely up to you.

Both vehicles have a fully equipped kitchen

and a multifunctional bathroom. So nothing stands in the way of self-sufficient travel!

In the 2024 model series we present a special innovation: the pop-up roof for the Van 620, which makes comfortable travelling for up to 4 people possible. Convince yourself and enjoy the freedom on four wheels with Ahorn Camp.

VAN 620
p. 10



VAN 550
p. 8



Family suitability with 4 sleeping berths pop-up roof
p. 9



RENAULT MASTER

135 PS

150 PS Twin-Turbo *

180 PS Twin-Turbo *

* Automatic available



All our vehicles have the latest engines with Euro 6d and AdBlue technology as standard and are therefore particularly low in emissions. The two available diesel engines with twin-turbo technology are also particularly powerful and economical.

Ahorn Camp has been building exclusively on Renault since 2014 and has maintained a close partnership with the French car manufacturer ever since. Throughout Germany, customers can get advice from over 40 Renault partners and benefit from a lar-

ge retail and service network. The trained teams on site are not only experienced in the field of motorhomes, but also have expertise in the vehicle technology of the chassis. In addition to a striking and elegant design, the Van Master also scores

with low fuel consumption and a durable driver's cab interior. It forms a solid foundation of performance and efficiency for our two Master-based campervan models.

MORE THAN A EVOLUTION, A REVOLUTION!

With bold style, LED daytime running lights and vertical front end, the MASTER showcases its robust and modern design. The modern dashboard, the wide range of equipment and the driver assistance systems make everyday life easier. In addition, you benefit from the latest engine series.



- Powerful twin-turbo engines with high torque
- Automatic start & stop
- Short braking distance
- Low consumption values
- Comfortable Renault sports seats
- Optional equipment highlights available
- Multiple DEKRA long-term test winner
- Rapid breakdown and accident assistance the Renault Assistance service network



Models



AHORN CAMP VAN 550



AHORN CAMP VAN 620



Single beds can be folded together

AVAILABLE COLOURS.



WHITE



SILVER*



BLACK*



GREY-BLUE*



STONEGREY

* Metallic paint

Van 550

 4  2 + 1 *

Renault Master

135 PS

150 PS Twin-Turbo **

180 PS Twin-Turbo **

* Cab bed (optional)

** Automatic available



Highlights

- + Compact and manoeuvrable
- + Large double bed in the rear
- + 70 l compressor fridge foldable on both sides
- + Truma Combi diesel heating
- + Two big skylights in the living area
- + Burglar-proof frame windows
- + Soft close drawers & hinges
- + Bid stowage under the rear bed



- Modern and fuel efficient motor
- Rotating, multi-adjustable sports seats
- Dining table can be hooked outside
- 3-in-1 Bathroom: WC, sink and shower
- Double bed with wall units
- Storage space under the bed: easy loading through two rear doors



Ahorn Camp Van 550

The 5.57-meter short and compact van inspires with its practical layout. While the space-saving bathroom combines shower, toilet and sink, the dishes can be prepared in the fully equipped kitchen which can also be enjoyed outside thanks to the flexible dining table. The refrigerator, which can be opened

on both sides, is located at the front part of the kitchen block and can therefore be easily opened from the inside as well as from the outside. The feel-good factor is provided by both the modern design and the lighting ambience. The storage space under the comfortable double bed in the rear can be used for

additional luggage, sports equipment or other bulky items.

The Van 550: your ideal travel companion, whether for spontaneous weekend trips or long adventure trips!



Van 620

 4  2 + 1*

Renault Master

135 PS

150 PS Twin-Turbo **

180 PS Twin-Turbo **

* Cab bed (optional)

** Automatic available



Highlights

- + Variable sleeping solutions
- + Lots of practical storage space
- + 70 l compressor fridge foldable on both sides
- + Truma Combi diesel heating
- + two big skylights in the living area
- + Burglar-proof frame windows
- + Windows & skylights with blinds & fly screens
- + Soft close drawers & hinge



- Modern and fuel efficient motor
- Rotating, multi-adjustable sports seats
- Dining table can be hooked outside
- 3-in-1 Bathroom: WC, sink and shower
- Beds fold up to increase cargo space
- Single beds convertible to double bed
- Family suitability thanks to 4 sleeping berths with optional pop-up roof
- High quality furniture with soft close drawers



Ahorn Camp Van 620

The award-winning Van 620, with a length of 6.22 meters, is the perfect vehicle for travelers who want to travel compactly and at the same time benefit from extensive equipment.

The cozy longitudinal beds in the rear can be easily connected to form a large double bed

by inserting an additional element. There is plenty of useful storage space under the beds. Thanks to the large number of cupboards and stowage options, the van offers the advantage of transporting large amounts of luggage or bulky cargo (beds in the rear can even be folded up).

The fully equipped kitchen and a multifunctional wet room with toilet & shower allow self-sufficient travel as a couple, small family or with friends. Cool drinks can be taken out of the refrigerator right at the entrance even from outside.



Van 620 plus

Industry first: The pop-up roof for the Van 620 on the Renault Master base offers a spacious and comfortable place to sleep on the road. With a lying surface of a generous 210 x 125 cm, it offers sufficient space for two people. Access to the pop-up roof is via the supplied telescopic ladder at the front of the vehicle. The comfortable eight-centimeter-thick softshell foam mattress ensures a restful night's sleep, while the 3D-Comfort carpet pad ensures optimum under-ventilation and a pleasant sleeping climate.

However, the advantages of the new pop-up roof go far beyond sleeping comfort. Thanks to the uncomplicated set-up of the roof within a few seconds, everyday suitability is guaranteed. The high-quality materials of the roof upper shell also ensure high stability and optimal insulation due to the 15 mm insulation core. Hinges and other attachments made of stainless steel offer the best corrosion protection even in salt water. A carrier rail is also fitted as standard for attaching a roof rack. With the new pop-up roof for the Van 620 models, we are expanding our customers' options for turning their vehicle into a comfortable home on wheels and using the vans as fully-fledged family vehicles for up to four people.



Two additional full sleeping berths in the pop-up roof



- Large bed 210 x 125 cm
- 8 cm thick softshell foam mattress
- Telescopic ladder for easy ascent
- Roof upper shell with 15 mm insulation core
- Stainless steel hinges
- Carrier rail as preparation for roof rack up to max. 50 kg

Option for two additional full-size sleeping berths in the pop-up roof of the Van 620 plus

Illustrations similar. Errors and omissions reserved.

Highlights



Practical outdoor shower in the rear area



New large skylight in the front area with blackout blind and fly screen



Comfortable, electric step



Modern designed kitchen unit



Functional fly screen door



Reorganized storage space in the rear ensures optimum use of space



70 l compressor refrigerator hinged on both sides from Dometic

Rechtliche und technische Hinweise zu den Fahrzeuggewichten und den gewichtsbezogenen Angaben

Due to the fact that every motorhome is only approved for a set total weight on the road, legal and technical specifications for vehicle weights play a significant role in selecting and configuring the right motorhome. It is important to remember that the total weight limit cannot be exceeded under any circumstances when driving. Otherwise, a fine may be imposed.

The legal requirements for motorhome vehicle weights are stated in the Commission Implementing Regulation (EU) 2021/535 of 31 March 2021 (until 06/2022: Commission Regulation (EU) No. 1230/2012 of 12 December 2012). These must be strictly adhered to when choosing and configuring your motorhome. For this reason, some clarifications and further information about "Vehicle weights and weight-related information" are provided below. Additionally, our sales staff will gladly assist you in selecting and configuring your motorhome.

1. The permitted total weight

The vehicle's permitted total weight (or the technically permissible maximum mass) is the weight recorded on the registration certificate under point F.1. This is the maximum your motorhome may weigh when loaded and being driven (e.g. 3500 kg). Fines may be imposed in several European countries, including Germany, if the total permitted weight is exceeded during your journey. Since you, as the driver, are responsible for adhering to the total permitted weight, you should weigh your motorhome before every trip and verify that the permitted total weight has not been exceeded.

The permitted total weight for each model is listed in the technical data in our catalogue.

2. Weight in running order

The weight in running order (or mass in running order) refers to the weight of the vehicle, including the following:

- its bodywork,
- standard factory-installed equipment,
- the fuel tank filled to 90% of its

capacity,

- the fresh water tank in the driving position (driving fill level – 20 l) filled to 100% capacity,
- a 9 kg aluminium gas bottle that is 100% full,
- the driver's weight, calculated at a fixed 75 kg,
- the spare wheel and tools.

Therefore, the weight in running order of your motorhome is the standard factory configuration plus the legally specified driver's weight of 75 kg. This is entered in section 13.1 of the EC Certificate of Conformity (CoC) by the manufacturer. Information about the weight in running order can also be found in the technical data for each model.

Note: The figures provided in the CoC and the technical data for the weight in running order are calculated values from the type approval procedure. These are subject to legally permissible tolerances of up to +/- 5%. These tolerances can have a direct impact on the weight of your motorhome, the remaining payload (or pay-mass), and consequently, on the remaining weight for optional equipment and accessories.

Example:

- Weight in running order according to technical data: 2868 kg
- Legally permissible tolerance of $\pm 5\%$: 143.4 kg
- Legally permissible weight in running order range: 2724.6–3011.4 kg

The legally permissible weight in running order range can also be found in the technical data for each model.

3. The number of permitted seats and the combined weight of all passengers

The manufacturer determines the number of permitted seats during the type approval procedure. This, in turn, determines the combined weight of all passengers. Regardless of the actual combined weight of all passengers, this is calculated at a fixed 75 kg per permitted seat, minus the driver's weight, which has already been accounted for in the weight in running order (see above).

Therefore, the combined weight of all passengers for a motorhome with four permitted seats is 225 kg (3 x 75 kg). The number of permitted seats specified in our sales documentation refers to the standard version of the respective model, excluding any optional equipment and accessories. This is the maximum number of people that can be transported in the vehicle. However, the number of permitted seats depends on the vehicle's individual weight and axle loads and may be reduced by installing optional equipment and accessories. Depending on the model, the stated number of seats may only be possible by increasing the total permitted weight and/or removing optional equipment and accessories.

4. The actual weight

The actual weight (or actual mass) of a motorhome is the weight in running order plus the weight of any factory-installed optional equipment (or additional equipment). The manufacturer enters the actual weight in section 13.2 of the EC CoC.

Note: The figures provided in the CoC and the technical data for the actual weight are calculated values from the type approval procedure. Since the weight in running order as part of the actual weight is subject to legally permissible tolerances of up to +/- 5%, any differences will impact the actual weight.

5. Optional equipment and accessories

Optional equipment and accessories refers to all equipment parts not included in your motorhome's standard factory configuration and can, therefore, only be ordered as an optional extra (at an additional cost). Information about optional equipment and accessories can be found in our sales documentation.

Note: Installing optional equipment and/or accessories will always reduce the remaining payload (or pay-mass).

6. The pay-mass and minimum pay-mass

A motorhome's payload, or pay-mass, is calculated by deducting the weight in running order, the combined weight of all passengers and the weight of the configured optional equipment and accessories from the total weight.

A motorhome is required by law to have a certain pay-mass for luggage and other items. This minimum payload must be kept free when configuring the mobile home. This so-called minimum pay-mass is calculated as follows:

Minimum pay-mass in kg $\geq 10 * (n + L)$

Where: "n" = the maximum number of passengers plus the driver, and "L" = the vehicle's overall length in metres.

Example:

For a motorhome with a length of six metres and four permitted seats (including driver), the minimum pay-mass is $10 \text{ kg} * (4 + 6) = 100 \text{ kg}$.

Note: Compliance with the minimum pay-mass must be rigorously adhered to when configuring the motorhome and cannot be compromised. The legally permissible tolerances of up to +/- 5% must also be taken into consideration as they can cause a reduction in the actual payload.

To ensure compliance with the legally mandated minimum pay-mass, we have limited the weight of the optional equipment and accessories available for each model in our product configurator based on empirical values for the tolerances that occur.

If the actual weight of the vehicle increases due to the configuration of optional equipment and accessories to the point where there is no longer sufficient free weight to carry the permitted passengers and minimum pay-mass, you can, depending on the model, either opt for a vehicle load increase, reduce the number of permitted seats and/or remove optional equipment or accessories to continue configuring the vehicle. Regardless of the legal minimum pay-mass requirements, you should consider the effect of legally permissible tolerances in the weight in running order on the remaining payload when configuring your motorhome.

If you order the motorhome from the previous example with 200 kg of optional equipment and accessories, the remaining payload (or pay-mass) based on the weight in running order indicated in the technical data is 207 kg:

3500 kg Technically permissible maximum mass
- 2868 kg Weight in running order
- 3 x 75 kg Combined weight of all passengers
- 200 kg Configured optional equipment/accessories

= 207 kg Remaining payload

However, the actual payload (or pay-mass) may be higher or lower due to the legally permissible tolerances. If, for instance, the actual weight in running order differs by +3% from the weight specified in the technical data, this reduces the remaining payload from 207 kg to 149.6 kg:

Example:

3500 kg Technically permitted maximum mass
- 2925.4 kg Actual weight of the vehicle in running order (+ 3% compared to the weight in running order of 2868 kg specified in the technical data)
- 3 x 75 kg Combined weight of all passengers
- 200 kg Ordered additional equipment for the specific configured vehicle

= 149.6 kg Remaining payload

(Note: The remaining payload must always be greater than the minimum pay-mass)

We recommend weighing your motorhome before every trip to ensure that the permitted total weight is not exceeded while driving and that the axle loads are always complied with. As the vehicle's driver, it is your responsibility to ensure that the technically permitted maximum weight is not exceeded. Additionally, our sales staff will gladly answer any questions you may have about "Vehicle weights and weight-related information".

Technical Data



MODELL

	Van 550	Van 620	Van 620 Plus
MECHANICAL UNIT	Renault Master	Renault Master	Renault Master
Displacement (Ccm)	2300	2300	2300
Diesel tank	105 l.	105 l.	105 l.
AdBlue tank	22 l.	22 l.	22 l.
Power (kW-HP)	99 – 135	99 – 135	99 – 135
Transmission	6 + R	6 + R	6 + R
Front-Wheeldrive	yes	yes	yes
Cabin Color	white	white	white
Radio MP3 - Bluetooth	optional	optional	optional
Board computer	optional	optional	optional
Double Airbags + ABS	yes	yes	yes
ESP + ASR	yes	yes	yes
Cruise control	optional	optional	optional
Front fog lights	optional	optional	optional
Electric Windows	optional	optional	optional
Central Locking System with Remote Control	yes	yes	yes
Cab air conditioning	optional	optional	optional

DIMENSIONS AND WEIGHTS

Outside length	5575	6225	6225
Outside width	2070	2070	2070
Outside height	2600	2600	2780
Certified seats	4	4	4
Weight ***	2747 (2610-2884)	2930 (2784-3077)	3070 (2917-3224)
Permissible overall weight	3500 (4000)	3500 (4000)	3500 (4000)

BEDS

Berths	2 + 1	2 + 1	4 + 1
Bed pop up roof	no	no	2100 x 1250
Rear bed	1360 x 1910	n1: 800 x 2000 n2: 800 x 1840	n1: 800 x 2000 n2: 800 x 1840
Cab bed	optional: 73 x 160	optional: 73 x 160	optional: 73 x 160

TANKS

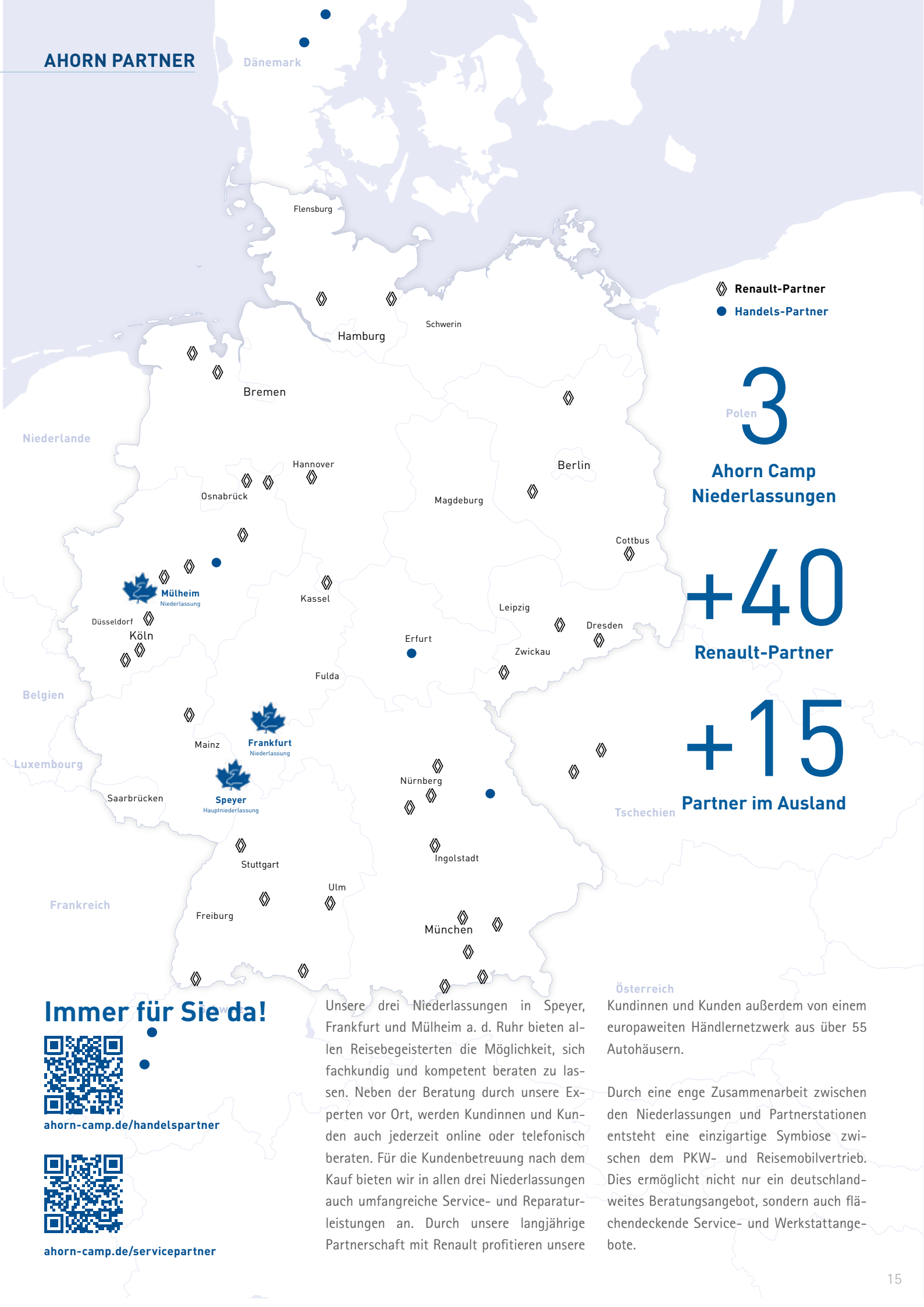
Fresh water tank	100 l.	100 l.	100 l.
Waste water tank	100 l.	100 l.	100 l.
WC tank	Thetford 17 l.	Thetford 17 l.	Thetford 17 l.

EQUIPMENT

Heating	Truma Combi 4 Diesel	Truma Combi 4 Diesel	Truma Combi 4 Diesel
Water boiler	Truma Combi 4 Diesel	Truma Combi 4 Diesel	Truma Combi 4 Diesel
Storage for gas bottles	1 x 11 kg Propan	1 x 11 kg Propan	1 x 11 kg Propan
Compressor Fridge	70 l.	70 l.	70 l.
No. burners	2	2	2
Double-glazed framed windows	yes	yes	yes
Battery living-area	yes	yes	yes
Power outlets (USB - 12 V - 220 V)	2-1-2	2-1-2	2-1-2
Cabin seat covers	optional	optional	optional
Cabin rotating seats	yes	yes	yes
Bicycle Rack (max. 2 bikes / max. weight 35 kg)	optional	optional	optional
Outdoor Led Light	optional	optional	optional
Roof rack 40 x 40	1 x yes	1 x yes	no
Roof rack 28 x 28 bathroom	1x yes	1x yes	no
Roof rack front 70 x 50	1x yes	1x yes	no
Panoramic roof window	optional	optional	no
Slatted frame	yes	yes	yes
Fly net door	optional	optional	optional
Outdoor shower	optional	optional	optional
Lithium battery incl. charger	optional	optional	optional
Truma CP+ Paneel	serie	serie	serie
Isfix Child Seat Mount	optional	optional	optional

* More powerful engine available | ** Several colors available | *** The weight in running order given in the technical data are calculated values from the type approval procedure, which are subject to legally permissible tolerances of up to +/- 5%. These tolerances can directly affect the weight of your motorhome, the remaining payload (or also: payload) and thus also the remaining weight for optional equipment and accessories. To ensure that the minimum payload is actually complied with, we recommend that you take the legally permissible tolerances for the weight in running order into account as a precaution when selecting and configuring your motorhome. Weights of the vehicles are empty weights in basic equipment incl. driver (75kg), diesel tank 90% filled, 20 liters of fresh water and a 9 kg aluminum gas bottle. The technical data and characteristics of the vehicles shown are only indicative. The manufacturer and the dealer are therefore not responsible for any changes that should be made for any reason during the season.

This brochure contains the series status at the time of printing. Despite checking the contents, printing errors cannot be ruled out. We reserve the right to make equipment changes or product improvements in the course of the model year.



◆ Renault-Partner
● Handels-Partner

3
Polen

**Ahorn Camp
Niederlassungen**

+40

Renault-Partner

+15

Partner im Ausland

Immer für Sie da!



ahorn-camp.de/handelspartner



ahorn-camp.de/servicepartner

Unsere drei Niederlassungen in Speyer, Frankfurt und Mülheim a. d. Ruhr bieten allen Reisebegeisterten die Möglichkeit, sich fachkundig und kompetent beraten zu lassen. Neben der Beratung durch unsere Experten vor Ort, werden Kundinnen und Kunden auch jederzeit online oder telefonisch beraten. Für die Kundenbetreuung nach dem Kauf bieten wir in allen drei Niederlassungen auch umfangreiche Service- und Reparaturleistungen an. Durch unsere langjährige Partnerschaft mit Renault profitieren unsere

Österreich

Kundinnen und Kunden außerdem von einem europaweiten Händlernetzwerk aus über 55 Autohäusern.

Durch eine enge Zusammenarbeit zwischen den Niederlassungen und Partnerstationen entsteht eine einzigartige Symbiose zwischen dem PKW- und Reisemobilvertrieb. Dies ermöglicht nicht nur ein deutschlandweites Beratungsangebot, sondern auch flächendeckende Service- und Werkstattangebote.

Your partner:

Head office Speyer

Ahorn Camp GmbH
Franz-Kirrmeier-Straße 8
67346 Speyer
Tel.: 06232 100280
info@ahorn-camp.de

Branch Mülheim an der Ruhr

Ahorn Camp GmbH
Kölner Straße 342
45481 Mülheim an der Ruhr
Tel.: 0208 69405400
nrw@ahorn-camp.de

Branch Dietzenbach

Ahorn Wohnmobile Frankfurt GmbH
Justus-von-Liebig-Str. 24
63128 Dietzenbach
Tel.: 06074 816060
info@ahorn-camp-frankfurt.de

